



To Create A Better Today, For A Brighter Tomorrow  
開創優良現在，建設更美好明天

# TRANSFORMER

## 變壓器



# TRANSFORMER

## General Information

Transformer plays an important part in power generation. We provide various types of transformers that customized the requirements of our clients, including:

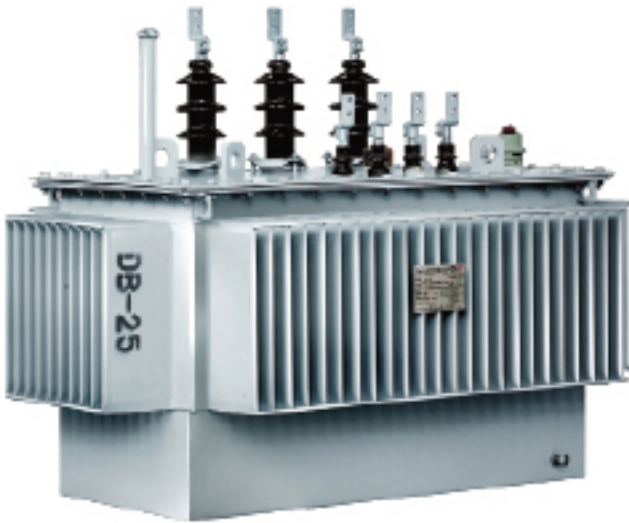
1. oil immersed transformer up to 33kV/330KV
2. Cast Resin Transformer up to 20MVA/35kV
3. Pad Mounted transformer
4. special transformer and components for transformer

Our products are accredited with ISO9001/ISO14001/OHSAS18001 Integrative Management Systems certification of 2000 version in 2003. Our products rank number one in the sampling or tests which were sponsored by national transformer testing organizations.

Besides, our 1600 KVA oil distribution transformer, 180 MVA power transformer as well as 2000 KVA cast resin transformer are all tested by KEMA, the world renowned testing laboratory

We are pleased to provide customized solution to our customers. Please visit our website for the updated product catalogue for more details. Other special or customized requirements are available

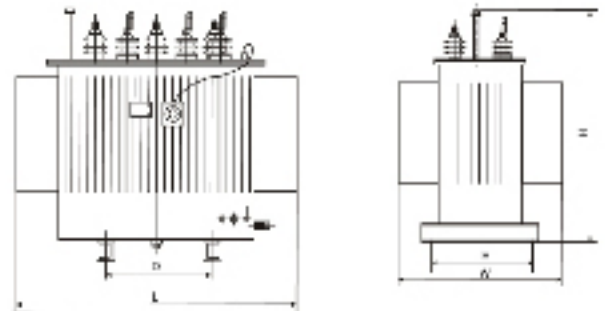




## Honours

### KEMA Certified

1. 180MVA, 220KV Power Transformer
2. 50MVA, 110KV Power Transformer
3. 2000KVA, 10KV Dry Type Transformer
4. 1600 KVA, 10KV Distribution Transformer



## Glance of our products

Type	Voltage	Capacity
Power Transformer	33kV-330kV	up to 360MVA
Dry Type Transformer	up to 33kV	up to 20MVA
Distribution Transformer	up to 35kV	up to 6300KVA
Pad Mounted Transformer	up to 11KV	up to 2500KVA

# POWER TRANSFORMER

**Product range: Voltage from 33kV to 330KV**

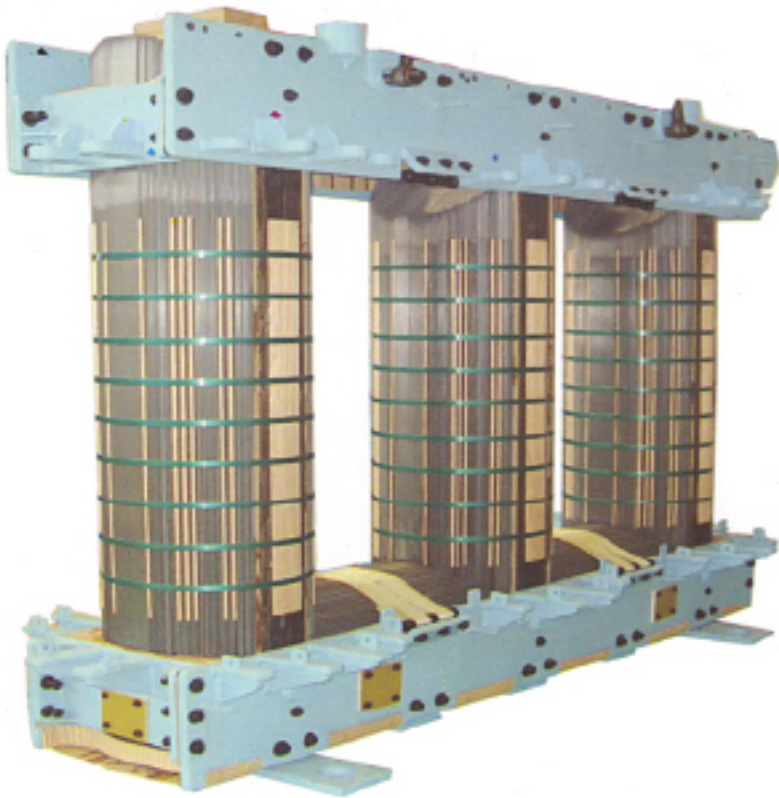
**Capacity: up to 360 MVA**

Comply with international standards and advanced technology and design, ensures every transformer in steady performance

## Features

- Low load loss & no load loss
- low sound level
- excellent withstand short-circuit capacity
- low partial discharge
- enhanced life expectancy





### Technical Specification for Power Transformer

<b>Voltage Ratio</b>	22/11, 22/6.9, 33/11, 33/6.9	66/11, 66/6.9, 66/22	110/33, 110/22, 110/11, 110/6.9, 132/33, 132/22, 132/11, 132/6.9	220/66, 220/33, 220/22, 220/11, 220/6.9, 220/110, 220/6.9, 220/110 (132)/33, 220/110(132)/11 (6.9), /220/66/11 (6.9)
<b>Capacity (MVA)</b>	6.3-7.5	6.3/120	8.0/240	20-400
<b>Phase</b>	Three Phase or Single Phase			
<b>Frequency</b>	50Hz or 60 Hz			
<b>Cooling Method</b>	ONAN or ONAF			
<b>Vector Group</b>	YNd1, YNd11, Dyn1, Dyn11, YnZ11, DZ10			YNd1, YNd11, YnZ11, YNa0d11, YNa0D1
<b>Insulation Level</b>	based on IEC Standard or Customer's requirement			
<b>Tap Charger</b>	OLTC or OCTC			
<b>Impedance</b>	based on IEC Standard or Customer's requirement			

We provide tailor made solution to our Clients. Please provide us with your customized specifications

# DISTRIBUTION TRANSFORMER

**Rated Voltage: up to 35kV**

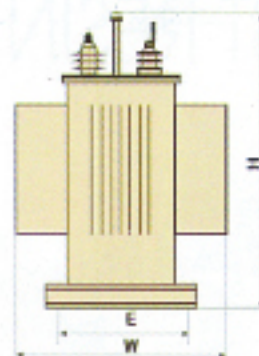
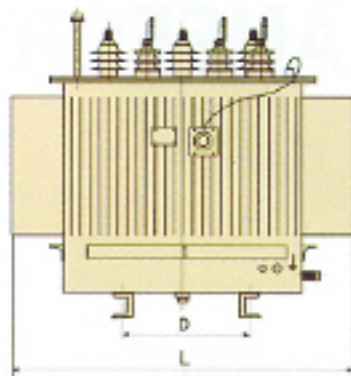
**Tapping Range: +5%; +2x 2.5%**

**Connection: Yyn0; Dyn11**

**Impedance Voltage: 4%; 4.5%; 5.5%**

With most up-to-date technology, high quality silicon steel, winding and insulation material, transformer have the advantage of energy saving, compact size, light weight and easy for installation

**Product Range: 11kV, 33kV, Capacity: upto 6300kVA**



## Features

- Low load loss & no load loss
- low sound level
- excellent withstand short-circuit capacity
- low partial discharge
- enhanced life expectancy

## Technical Specification of Distribution Transformer

Type	Rating (KVA)	Voltage		(KW) Loses		Impedance Voltage (%)	NO-load Current (%)	Weight (kg)			Dimension (mm)			Track x gap
		(KV) Primary	(KV) Secondary	NO-Load	Load						Oil	Total	L	
S9-10-10	10			0.07	0.27	4	2.6	115	50	195	950	450	880	400x 400
S9-20-11	20			0.1	0.43		2.3	115	50	195	740	570	875	400x 400
S9-30-11	30			0.13	0.6		2.1	185	70	295	775	615	930	400x 400
S9-50-11	50	6		0.17	0.87		2	240	85	370	818	462	970	400x 400
S9-80-11	80	6.3	0.4	0.25	1.25		1.8	290	105	480	890	564	985	400x 500
S9-100-11	100	11		0.29	1.5		1.6	345	120	520	880	627	1085	400x 500
S9-125-11	125			0.34	1.8		1.4	415	120	615	920	717	1100	550x 550
S9-160-11	160			0.4	2.2		1.4	460	140	715	985	670	1075	550x 550
S9-200-11	200			0.48	2.6		1.3	526	155	815	1268	688	1165	550x 550
S9-250-11	250			0.56	3.05		1.2	625	190	970	1268	688	1165	550x 550
S9-315-11	315			0.67	3.65		1.1	680	185	1035	1253	793	1123	550x 550
S9-400-11	400			0.8	4.3		1	790	210	1215	1403	928	1343	550x 550
S9-500-11	500			0.96	5.1		1	955	225	1420	1463	958	1200	660 x 660
S9-630-11	630			1.2	6.2	4.5	0.9	1225	335	1850	1600	908	1350	660 x 660
S9-800-11	800			1.4	7.5		0.8	1475	380	2195	1662	927	1425	660 x 660
S9-1000-11	1000			1.7	10.3		0.7	1650	450	2655	1777	1057	1530	820 x 820
S9-1250-11	1250			1.95	12		0.6	1970	515	3055	1802	1052	1615	820 x 820
S9-1600-11	1600			2.4	14.5		0.6	2300	570	3580	1917	1117	1810	820 x 820
S9-2000-11	2000			2.5	19.6	5.5	0.4	2655	680	4075	2052	1210	1755	820 x 820
S9-2500-11	2500			3.2	21.6		0.4	3300	1200	5900	2740	1310	2550	1070 x 1070
S10-50-33	50			0.19	1.15		2.8		280	770	1795	675	930	550x 550
S10-100-33	100			0.26	1.97		2.6		360	1010	1840	1210	1160	550x 550
S10-125-33	125			0.3	2.26		2.5		400	1100	1900	1210	1170	660 x 660
S10-160-33	160			0.33	2.68		2.4		460	1280	2060	1220	1190	660 x 660
S10-200-33	200			0.39	3.15		2.2		500	1440	2090	1220	1200	660 x 660
S10-250-33	250			0.46	3.74		2		550	1670	2130	1240	1245	660 x 660
S10-315-33	315			0.53	4.51		1.9		580	1900	2180	1260	1690	660 x 660
S10-400-33	400			0.65	5.44		1.9		620	2150	2230	1290	1750	660 x 660
S10-500-33	500	33	0.4	0.76	6.55	6.5	1.8		680	2350	2280	1310	1800	660 x 660
S10-630-33	630			0.91	7.82		1.2		880	3540	2350	1360	1915	820 x 820
S10-800-33	800			0.97	9.35		1		1000	4000	2420	1380	2150	820 x 820
S10-1000-33	1000			1.16	11.48		0.9		1120	4500	2500	1480	2210	820 x 820
S10-1250-33	1250			1.37	13.86		0.8		1190	4900	2600	1550	2465	820 x 820
S10-1600-33	1600			1.66	16.58		0.7		1420	6000	2700	1620	2600	820 x 820
S10-2000-33	2000			2.03	17.9		0.7		1500	6660	2790	1850	1780	820 x 820
S10-2500-33	2500			2.45	19.5		0.6		1670	7570	2860	2000	2820	1070 x 1070
S10-3150-33	3150			3.01	23		0.6		2100	10300	3130	2340	2890	1070 x 1070
S10-4000-33	4000			3.61	24.6		0.6		2100	10500	32100	2780	2950	1070 x 1070

We provide tailor made solution to our Clients. Please provide us with your customized specifications

# CAST RESIN TRANSFORMER

Rated Voltage: upto 35kV

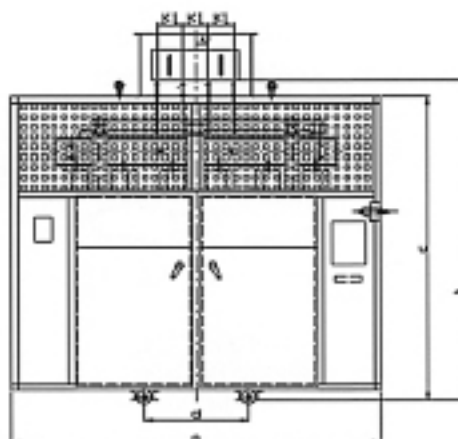
Tapping Range: +5%'+2x 2.5%

Connection: Dyn11; Yyn0

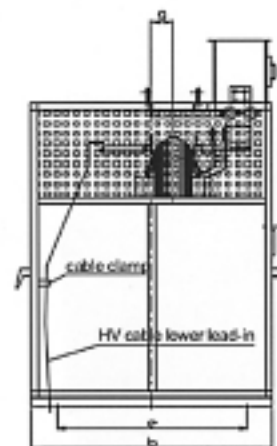
Impedance Level: L175AC35/AC3, L170AC70/AC3



FRONT VIEW



SIDE VIEW





## Technical Specifications of Cast Resin Transformer

Type	UK%	PO (W)	Pk (75°C) (W)	LO (%)	LP db (A)	Gt (kg)	Dimension (mm)									
							a	b	c	d	e	f	g	h	k1	k2
SC9-30/11		195	650	1.6	44	340	800	600	980	550	400	788	185	211	150	75
SC9-50/11		280	900	1.6	44	400	860	600	1000	400	400	793	190	231	150	75
SC9-80/11		380	1270	1.4	45	580	860	600	1020	400	400	858	195	237	150	75
SC9-100/11		420	1450	1.4	45	680	950	600	1070	400	400	883	200	240	150	75
SC9-125/11		490	1700	1.2	46	790	1000	600	1080	400	400	907	210	240	150	75
SC9-160/11		560	1960	1.2	46	855	1050	600	1090	400	400	950	225	250	150	75
SC9-200/11	4	650	2330	1	47	930	1100	700	1100	550	550	993	249	259	150	75
SCB9-250/11		750	2540	0.8	47	1100	1150	700	1100	550	550	1028	255	266	390	260
SCB9-315/11		910	3200	0.8	48	1290	1180	710	1120	550	550	983	281	275	395	260
SCB9-400/11		1000	3680	0.8	48	1520	1220	890	1175	550	550	1080	292	283	410	260
SCB9-500/11		1200	4510	0.6	48	1800	1250	830	1260	660	660	1185	297	288	425	260
SCB9-630/11		1390	5430	0.6	49	2085	1300	830	1360	660	660	1265	310	298	440	260
SCB9-630/11		1350	5510	0.6	49	2030	1340	830	1285	660	660	1180	295	284	450	260
SCB9-800/11		1630	6430	0.5	50	2450	1420	880	1385	660	660	1265	320	298	480	300
SCB9-1000/11		1830	7510	0.5	50	2780	1500	880	1380	660	660	1280	330	308	505	300
SCB9-1250/11	6	2170	8960	0.5	52	3375	1610	900	1490	660	660	1350	342	321	545	300
SCB9-1600/11		2530	10850	0.5	52	4146	1730	920	1565	660	660	1425	375	332	585	300
SCB9-2000/11		3360	13360	0.4	53	4700	1770	960	1685	660	660	1515	381	339	595	400
SCB9-2500/11		4000	15870	0.4	54	5600	1840	960	1845	820	820	1655	401	345	620	450

Type	UK%	PO (W)	Pk (75°C) (W)	LO (%)	LP db (A)	Gt (kg)	Vector Group	L	W	H (body only)	L	W	H (Enclosure)	Track x gap
								m	m	m	m	m	m	m x m
SC9-30/33		360	1050	2.4	49	500	Yyno or Dyn11	1320	750	1300	2100	1500	2000	660 x 550
SC9-50/33		450	1310	2.2	49	620		1330	750	1305	2100	1500	2000	
SC9-80/33		520	1750	1.8	49	800		1360	815	1468	2100	1500	2000	
SC9-100/33		600	2000	1.6	50	1100		1385	750	1430	2200	1600	2000	
SC9-125/33		760	2440	1.6	50	1220		1420	900	1500	2200	1600	2000	
SC9-160/33		860	2800	1.6	50	1350		1450	920	1550	2200	1600	2000	
SC9-200/33		960	3050	1.2	50	1500		1490	920	1690	2200	1600	2150	
SCB9-250/33		1080	3500	1.2	51	1700		1490	920	1760	2200	1600	2150	
SCB9-315/33		1250	3840	1	51	1900		1585	835	1640	2350	1650	2150	
SCB9-400/33		1530	4950	1	51	2150		1770	885	1695	2350	1650	2200	
SCB9-500/33	6	1780	6080	0.8	52	2580		1810	920	1695	2400	1650	2200	
SCB9-630/33		2050	7090	0.8	52	2800		1870	925	2005	2400	1650	2250	820 x 660
SCB9-800/33		2400	8400	0.6	52	3450		1880	1030	1925	2600	1700	2300	
SCB9-1000/33		2700	9660	0.6	52	4000		1970	1060	1965	2700	1700	2300	
SCB9-1250/33		3150	11700	0.4	53	4350		1980	1050	1980	2700	1700	2300	
SCB9-1600/33		3580	14220	0.4	53	5235		2050	1050	2080	2800	1700	2580	1070 x 820
SCB9-2000/33		4200	16740	0.4	54	6330		2200	1050	2200	3000	1800	2650	
SCB9-2500/33		4900	20040	0.4	55	7550		2350	1100	2320	3000	1800	2580	1070 x 1070
SCB9-3150/33	8	5850	24000	0.35	56	7800	2500	1270	2325	3200	2100	2585		
SCB9-4000/33		6800	28500	0.35	57	9600	2660	1270	2368	3350	2100	2740		

We provide tailor made solution to our Clients. Please provide us with your customized specifications

## **PAD MOUNTED TRANSFORMER**

Assemble transformer, switchgear, breaker and fuse in one compact cabinet, make it more compact and easy to install

**Product Range: upto 11kV**

**Capacity: upto 2500kVa**



## Feature

1. Compact size
2. light weight
3. low loss
4. low noise
5. high reliability

## Technical Specifications of Pad-Mounted Transformer

NO	Description	Unit	HV	Transformers	LV
1	Rated Capacity	kVA		30-2500	
2	Rated Voltage	kV	11	±5%±2x2.5%	0.4
3	Rated Maximum Voltage	kV	12	Yyn0, DYN11	
4	Tapping Range				
5	Vector Group				
6	Rated Current	A	15-560		50-3200
7	Rated Short-Time Withstand Current	kA	12.5\16\20		15-75
8	Rated short Withstand time	S	2		1
9	Rated Peak Withstand Current	kA	31.5\40		30~63
10	Power Frequency Withstand Voltage	kV	42	35	
11	Impulse Withstand Voltage	kV	75	75	
12	(HV fuse) Rated Current	kA	50		
13	Backup Fuse	A		100,125	
14	Enclosure Protection LevelPC		IP33	Totally-enclosed	IP33
15	Ambient Temperature	°C	-20~+40		
16	Rated Frequency	Hz	50 or 60		
17	Sound Level	dB	<55		

We provide tailor made solution to our Clients. Please provide us with your customized specifications

## CONTACT US 聯絡我們

### Hong Kong Head Office / 香港總公司

#### FU LEE (ASIA) LTD

##### 富利(亞洲)有限公司

Units 2303-05, 23/F, Millennium City 3  
370 Kwun Tong Road, Kwun Road, Kwun Tong, Kowloon, Hong Kong  
香港九龍觀塘觀塘道370號創紀之城3期23樓03-05室  
Tel / 電話: +852-2375 2238  
Fax / 傳真: +852-2375 8607  
Email / 電郵: info@fuleeasia.com  
Website / 網址: www.fuleeasia.com

### Subsidiary in HK / 香港分公司

#### FU LEE LIFESTYLE LTD

##### 富利雅活有限公司

Units 2303-05, 23/F, Millennium City 3  
370 Kwun Tong Road, Kwun Road, Kwun Tong, Kowloon, Hong Kong  
香港九龍觀塘觀塘道370號創紀之城3期23樓03-05室  
Tel / 電話: +852-2375 2238  
Fax / 傳真: +852-2375 8607  
Email / 電郵: kenneth.lo@fuleeasia.com

### Shanghai Office / 上海分公司

#### FU LEE (SHANGHAI) LTD

##### 中富利貿易(上海)有限公司

Room 805, No.1076 Changshou Rd, Shanghai 200042  
中國上海市普陀區長壽路1076號飛龍商務大廈805室  
Tel / 電話: +86-21-6095 7126  
Fax / 傳真: +86-21-6095 9849  
Email / 電郵: info@fulee-sh.com

### Guangdong Office / 廣東分公司

#### FU LEE (ASIA) LTD - FOSHAN REPRESENTATIVE OFFICE

##### 富利(亞洲)有限公司 - 佛山代表處

Unit D, 30/F, Development Building, Hua Yuan East Road  
Foshan 528000, Guangdong, China  
中國廣東省佛山市華遠東路發展大廈30樓D室  
Tel / 電話: +86-757-82368266 / +86-757-82368277  
Email / 電郵: info@fuleeasia.com

### Madagascar Office / 馬達加斯加分公司

#### FU LEE (MADAGASCAR) LTD

##### 富利(馬達加斯加)有限公司

Chez Societe Rova, 3eme etage Salle de conference  
AVANCE CENTER Tsiazotafo, Lot IVE 11, Antananarivo 101  
MADAGASCAR  
Tel / 電話: 032 04 398 23

### Malaysia Office / 馬來西亞分公司

#### FU LEE POWER EQUIPMENTS SDN. BHD

NO 14, Jalan Utama 2/2  
Taman Perindustrian Puchong Utama  
Seksyen 2, 47100 Puchong, Selangor, Malaysia  
Tel / 電話: +86-757-22804888  
Fax / 傳真: +86-757-22804828

### JV Company / 中外合資公司

#### PRAMAC FU LEE (FOSHAN) POWER EQUIPMENT CO LTD

奔馬富利(佛山)動力設備有限公司  
NO 25, Xinhui Road, Wusha, Daliang, Shunde District  
Foshan City, Guangdong, 528333, China  
中國廣東省佛山市順德區大良街道五沙新輝路25號  
Tel / 電話: +86-757-22804888  
Fax / 傳真: +86-757-22804828





**FU LEE (ASIA) LTD**

Units 2303-05, 23/F, Millennium City 3  
370 Kwun Tong Road, Kwun Road, Kwun Tong  
Kowloon

Tel: +852-23752238

Fax: +852-23758607

Email: [info@fuleeasia.com](mailto:info@fuleeasia.com)

Website: [www.fuleeasia.com](http://www.fuleeasia.com)